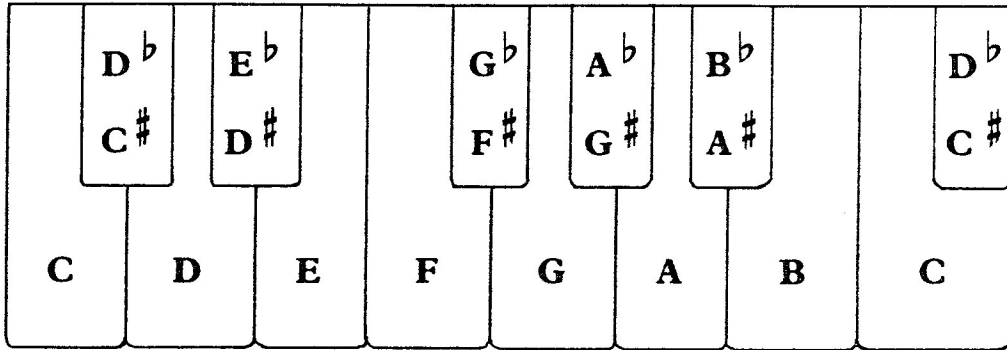


Whole and Half Steps

In music, a *step* is the distance from one note on the staff to the next note above or below. Whole and half steps are shown easily on a piano keyboard. A half step is the distance between any key and the key nearest to it (either two white keys that have no black key between them or a white key and the nearest black key). A whole step equals two half steps.



A. Fill in the blanks with either “whole” or “half.”

- | | |
|--------------------------------|----------------------------------|
| 1. From C to D is a ____ step. | 6. From C to C# is a ____ step. |
| 2. From E to F is a ____ step. | 7. From F to F# is a ____ step. |
| 3. From B to C is a ____ step. | 8. From B to Bb is a ____ step. |
| 4. From G to A is a ____ step. | 9. From E to F# is a ____ step. |
| 5. From A to B is a ____ step. | 10. From B to C# is a ____ step. |

B. a. Draw your clef sign and name the notes.

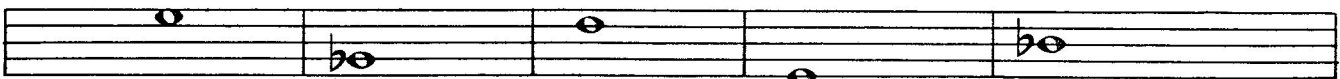
b. Draw and name the note that is one half step above the note given.



1. ____ 2. ____ 3. ____ 4. ____ 5. ____

C. a. Draw your clef sign and name the notes.

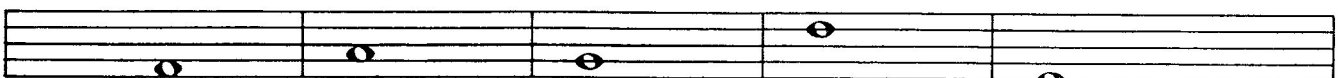
b. Draw and name the note that is one whole step above the note given.



1. ____ 2. ____ 3. ____ 4. ____ 5. ____

D. a. Draw your clef sign and name the notes.

b. Draw and name the note that is one whole step above the note given.



1. ____ 2. ____ 3. ____ 4. ____ 5. ____